

CAUTION!
HIGH VOLTAGE

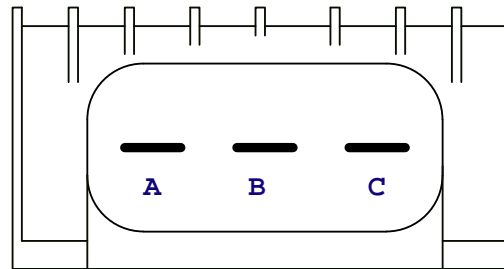


**DISCONNECT POWER BEFORE
WORKING ON UNIT**

M & W IGNITIONS

Performance & Quality since 1996

FACTORY CONNECTIONS



A - Coil +

B - +12V

C - Points

Note!

**This information is for identification purposes only
Do not attempt to re-use old existing wiring and terminals**

Title			BOSCH 3 PIN CDI CONNECTION
Size	Number	Revision	
A4	(C) M&W Ignitions	14.04.24.1	
Date:	14-Apr-2024	Sheet	1 of 1
File:	D:\M&W\...\Bosch B3 connections.sch	Drawn By:	M&W